

THE ESSENTIAL

# FLEX COURT ATHLETICS

BUYER'S GUIDE



neavesports

tennis & multi-game courts, putting greens & more





# TABLE OF CONTENTS

- 04 INTRODUCTION
- 06 WHAT IS FLEX COURT?
- 07 5 BIG REASONS FLEX COURT TILES ARE BETTER THAN TRADITIONAL SPORT SURFACES
- 08 FLEX COURT'S TILE OPTIONS
- 10 PLAY BALL! MULTIPLE SPORT SURFACE APPLICATIONS WITH FLEX COURT TILES
- 16 ADDITIONAL FLEX COURT APPLICATIONS
- 17 WHAT TO EXPECT: THE FLEX COURT INSTALLATION PROCESS
- 20 GET THE BALL BOUNCING WITH NEAVE SPORTS
- 21 TURNING HOOP DREAMS INTO REALITY









# INTRODUCTION

At Neave Sports, we see the lasting value in family togetherness. **And that's why we love sports.**

Whether you're playing a little 3-on-3 basketball or mixed doubles with the neighbors, sports naturally bring friends, family and fitness together in one place. (Maybe your place?)

The benefits of physical exercise are no secret. And when it comes to organized sports, its merits are just as researched and impressive. Playing sports can help:

- fight childhood obesity
- teach teamwork and social skills
- reduce stress and excess energy
- instill the values of a good work ethic, accountability, goal setting and dedication
- improve academic performance

After witnessing sports play such a positive role in the lives of our clients — not to mention our own — Neave Sports' partnership with Flex Court Athletics, which began in 2008, makes a lot of sense. Flex Court Athletics manufactures state-of-the-art, all-weather performance interlocking tiles to create outdoor sport surfaces for weekend warriors to seasoned athletes.

From jump shots to drop shots, there's a Flex Court design perfect for your home. And Neave Sports, as an authorized Flex Court dealer, believes these longlasting and highly customizable surfaces are an easy, dependable way to bring the benefits of home court advantage to your own backyard.





**THE  
FAMILY  
THAT  
PLAYS  
TOGETHER  
STAYS FIT  
TOGETHER.**



# WHAT IS FLEX COURT?

Flex Court Athletics produces durable, interlocking tiles that snap into place over a base surface. Sounds simple enough. But the research and development behind this surface is astonishing, to say the least, and may just make you reconsider the need to play on a traditional sports surface — ever again.

According to Flex Court Athletics, its outdoor tiles are made of a high-density polypropylene, virgin-resin with UV and oxidation protection. Its patented interlocking design allows tiles to click in place, creating a 3/4-inch thick, high-performance athletic surface that is virtually weatherproof thanks to its self-draining design.





# 5 BIG REASONS **FLEX COURT TILES** ARE BETTER THAN TRADITIONAL SPORT SURFACES

## **SURFACES**

"Self-draining" — you caught that, right? With Flex Court outdoor tiles, a passing rain shower no longer has to mean hours of dry time or the need to haul out a squeegee. A self-draining design is just one of the many advantages Flex Court outdoor tiles have over traditional sport surfaces.

Here's a look at more proof you've come to the right place for your family of athletes.

## **SHOCK ABSORBENT**

In addition to incredible traction, Flex Court surfaces absorb shock. What does that mean for you? It means less stress on your joints and more time on the court.

Did you know orthopedic surgeons medically recommended Flex Court for its built-in lateral and vertical forgiveness?

The understructure of Flex Court's 3/4-inch thick, co-polymer outdoor sport tiles use a high flex suspension system. The design of this tile support structure is based on a proven suspension technology producing the highest Flexion rating in the industry.

## **WEATHER INDEPENDENT**

At Neave Sports, we like to call Flex Court outdoor tiles an "all-weather" surface option. That's because no matter what Mother Nature dishes out, these outdoor tiles are ready for your pivots, drop steps and split-second changes of direction in any weather.

Each tile's self-draining, suspended design is quick drying and reduces the chances for dangerous puddles. And in the event of temperature extremes — hot or cold — Flex Court's surface expansion technology expands and contracts without issue, which means no buckling or cracking.

## **LOW MAINTENANCE**

All outdoor Flex Court surfaces are protected by ultraviolet (UV) and antioxidant (AO) stabilizers to maintain color, have a life expectancy of approximately 25 years and come with a 16-year manufacturer's limited warranty. These courts' maintenance costs are about 50 percent less than regular court surfaces as well. No more repainting, striping and sweeping.

If that doesn't give you enough peace of mind, this might: If a tile is damaged, simply replace it. Repairing a Flex Court surface is a snap, compared to complicated renovation projects for traditional courts, where you have to place huge sections or do messy patchwork.

## **CUSTOMIZABLE**

Let's talk looks. Say you want a tennis court that's far from traditional. Purple it is. Or maybe you're a proud alum and want to show off a little school pride. No problem. You can even add your school's logo or mascot for good measure.

Flex Court Athletics puts you in the designer's seat to create a one-of-a-kind surface. Flex Court tiles are available in 18 different colors and a seemingly infinite number of combinations.

Speaking of infinite, court configurations are available in every shape and size. There's a Flex Court perfect for the space you have.


## **RESURFACING**

Do you have an existing concrete or asphalt court surface at home that's lost its luster by way of cracks, faded lines and puddles that never seem to disappear?

It's time to stop shelling out money on maintenance and repairs. Retrofitting your current setup with Flex Court outdoor tiles is a long-lasting solution with a simple process:

1. Fill any existing cracks.
2. Design your court layout.
3. Cover original court surface with Flex Court tiles.
4. Game on.





# **FLEX COURT'S TILE OPTIONS**

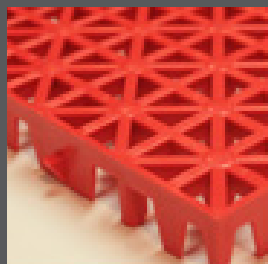


# OUTDOOR SPORT TILES



## PROSTEP

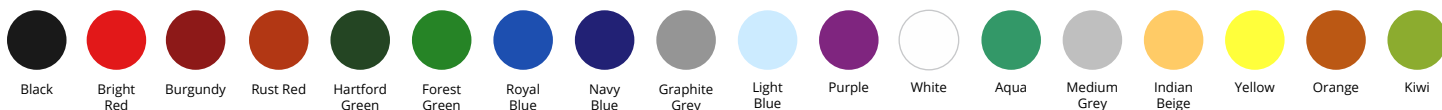
This is Flex Court's original and most popular outdoor tile. It has an aggressive surface texture for superior traction. While it's designed for every sport, it is ideal for basketball, racquet sports and roller hockey. Backed by a 16-year manufacturer's limited warranty.



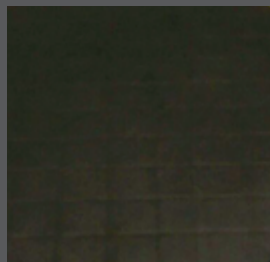
## SOFTSTEP

Designed with smaller children and recreational athletes in mind, SoftStep tiles offer a lower-friction surface textured with effective traction points. A great choice for drier regions, this option is ideal for multigame courts, shuffleboard and outdoor inline hockey. Backed by a 16-year manufacturer's limited warranty.

Available in:



# INDOOR TILES



## GYMFLEX

This premium sport surface has a heavy-gauge, high-density finish that is notably stronger when compared to other modular tile alternatives in its class. It does not require waxing/refinishing and retrofits easily over existing floors. Backed by a 10-year manufacturer's limited warranty.



## MAPLEFLEX

Similar to GymFlex, MapleFlex takes indoor flooring to another level with the look and feel of a maple sport surface. The life of the flooring is also extended with the added surface technology, FlexShield. Backed by a 10-year manufacturer's limited warranty.



## AEROBIFLEX

The ideal flooring choice for activities such as Zumba, pilates, dance and yoga, AerobiFlex is designed for comfort. It is shock absorbent and doesn't run the risk of mildew or bacterial build-up. Backed by a 5-year manufacturer's limited warranty.



## RUBBERFLEX

While it can easily withstand industrial or commercial use, a RubberFlex non-porous, non-skid rubber mat is perfect flooring option for any home gym. These tiles are a high-density, molded vulcanized material made from 100 percent recycled tire rubber. Backed by a 5-year manufacturer's limited warranty.





# PLAY BALL!

## MULTIPLE SPORT SURFACE APPLICATIONS WITH FLEX COURT TILES

Whether you're a single-sport enthusiast or want the versatility of a multigame court, you've got options with Flex Court Athletics surfaces. With Flex Court tiles, homeowners can turn nearly any space — big or small — into a sport surface. Here's a look at some of the most popular court configurations.

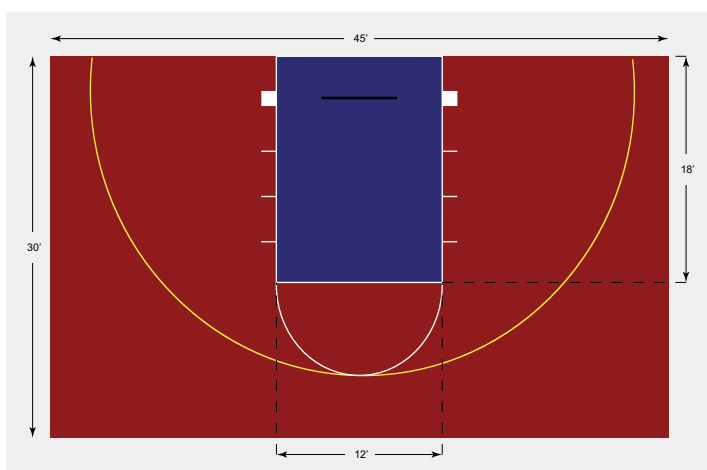


# BASKETBALL

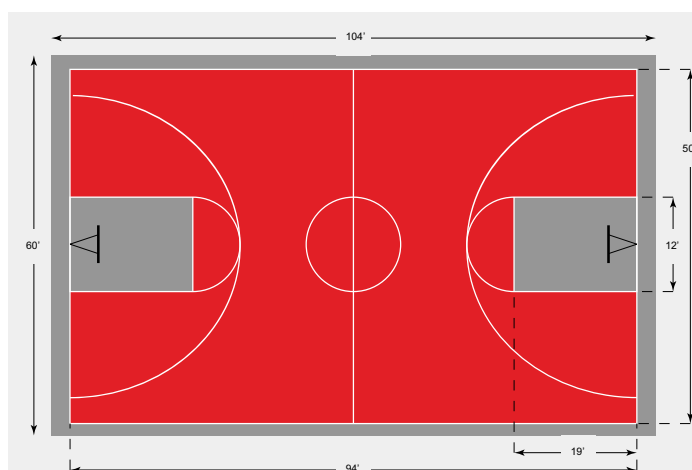
From H-O-R-S-E to pick-up games, unleash your inner LeBron the next time you're passed the rock. Flex Court tiles offer a variety of outdoor basketball court sizes and layouts to fit your hooping needs. You pick: full court, half court, three point line, free throw line — the space you have will determine the basketball court of your dreams.

Flex Court's ProStep tiles are perfect for a backyard basketball court. After all, the tile's design is based on an orthopedic concept to absorb shock and reduce lateral and vertical stresses. Can you hear that? *It's your knees rejoicing.*

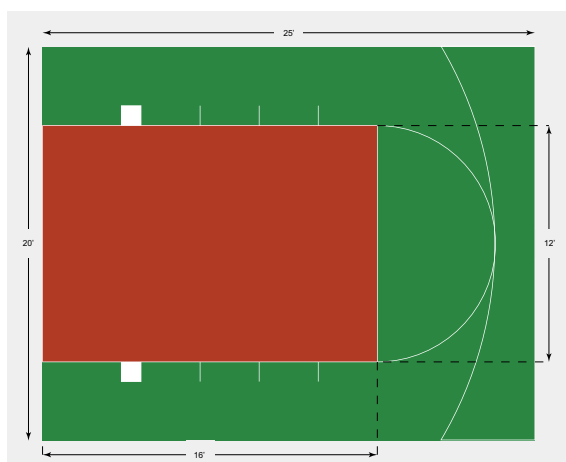
## OUR MOST COMMON BASKETBALL COURT LAYOUTS



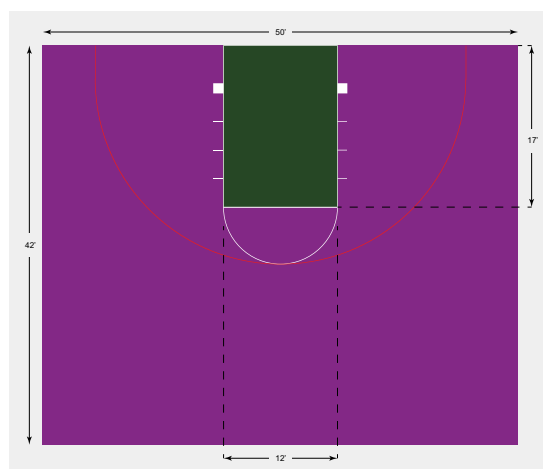
THREE POINT SHOOTOUT



NBA/NCAA FULL COURT



FREE THROW PRACTICE



HALF COURT PRESS



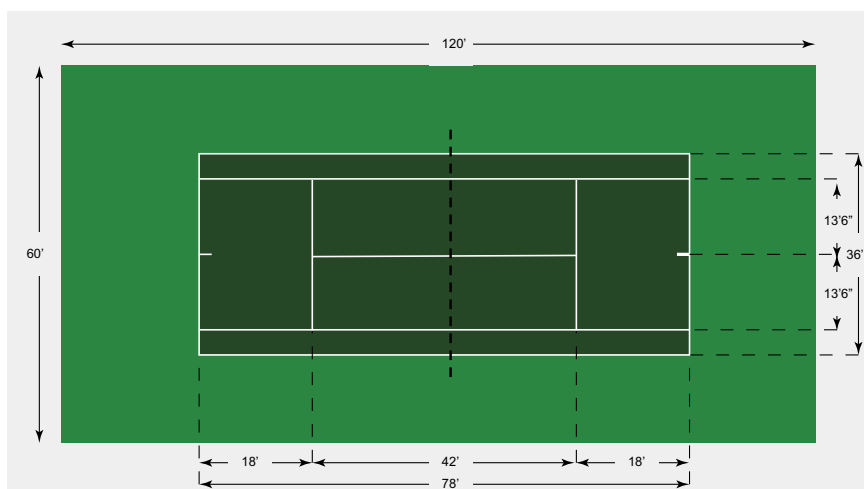
# TENNIS

Tired of fighting for court time at your local racquet club? Not getting a true bounce on those courts at the neighborhood park? Bring the competition home!

Flex Court's ProStep tiles give tennis players a quick-drying, all-weather court option that provides a consistent ball bounce and a speed of play similar to clay tennis courts. The Flex Court tennis surfaces Neave Sports install follow ITF and USTA ratings as a Pervious, Cushioned and Fast Dry Surface with a Category 5 Fast pace high performance surface suitable for all skill levels, from novices and weekend hackers to advanced juniors and touring professionals.

And let's not forget those shock-absorbing, body-friendly qualities: Thanks to the help of orthopedic surgeons, ProStep tiles were engineered to ensure the best in grip ratio. With Flex Court tiles, tennis truly can be a sport for a lifetime.

## OFFICIAL TENNIS COURT DIMENSIONS





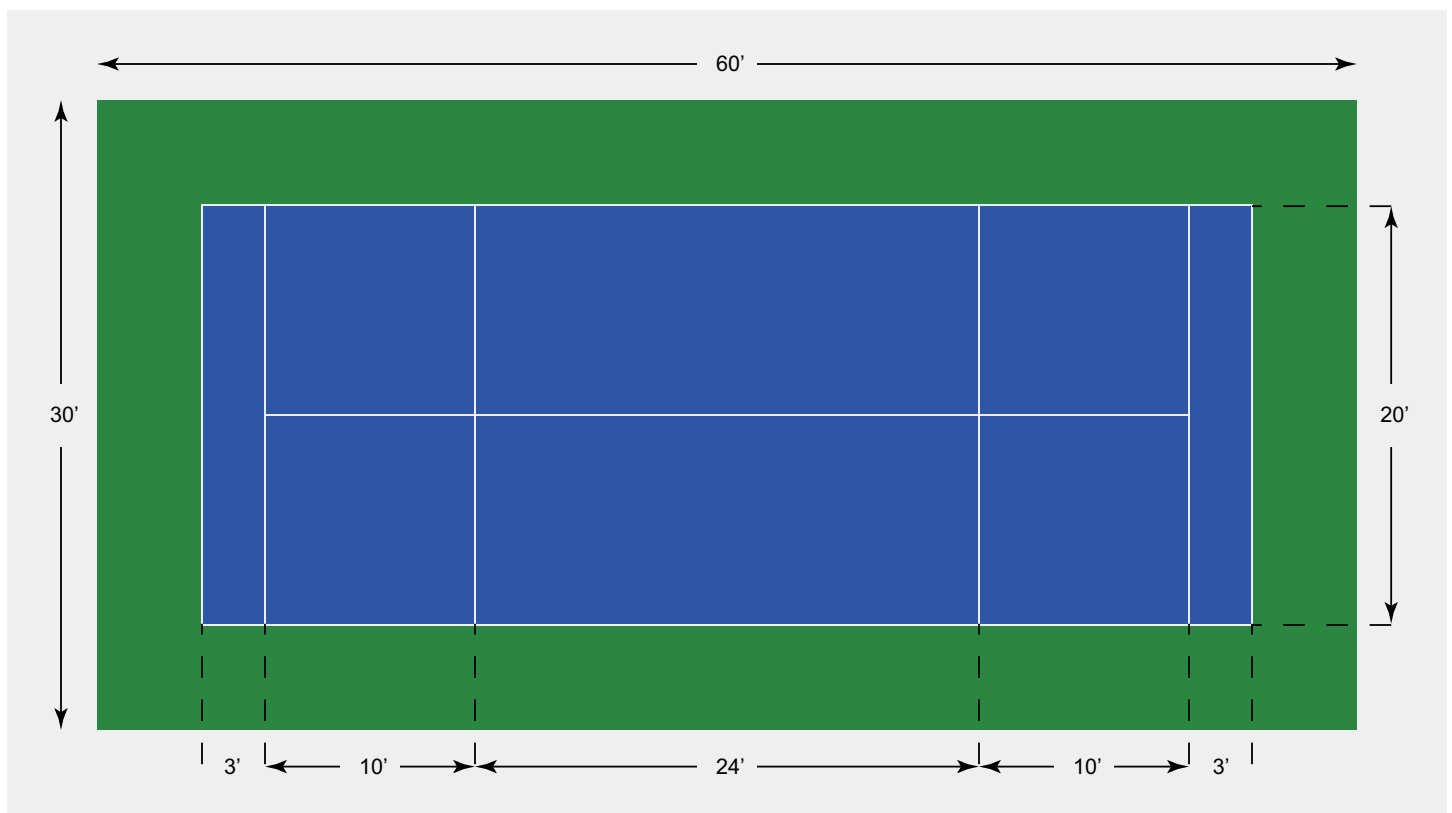
# PADDLE TENNIS

Love tennis but limited on space? Paddle tennis is your answer. The strokes, grips, scoring and strategy are the same.

Court dimensions aside, the big differences between tennis and paddle tennis are serving (server is allowed one underhand serve) and equipment (a deadened ball and a solid paddle instead of a strung racquet).

Thanks to its slower speed and reduced court size (50 x 20 feet), paddle tennis continues to gain popularity with racquet-sport enthusiasts of all ages and skill levels. Flex Court's ProStep or SoftStep outdoor tiles are excellent surface options for this sport.

## OFFICIAL PADDLE TENNIS COURT DIMENSIONS

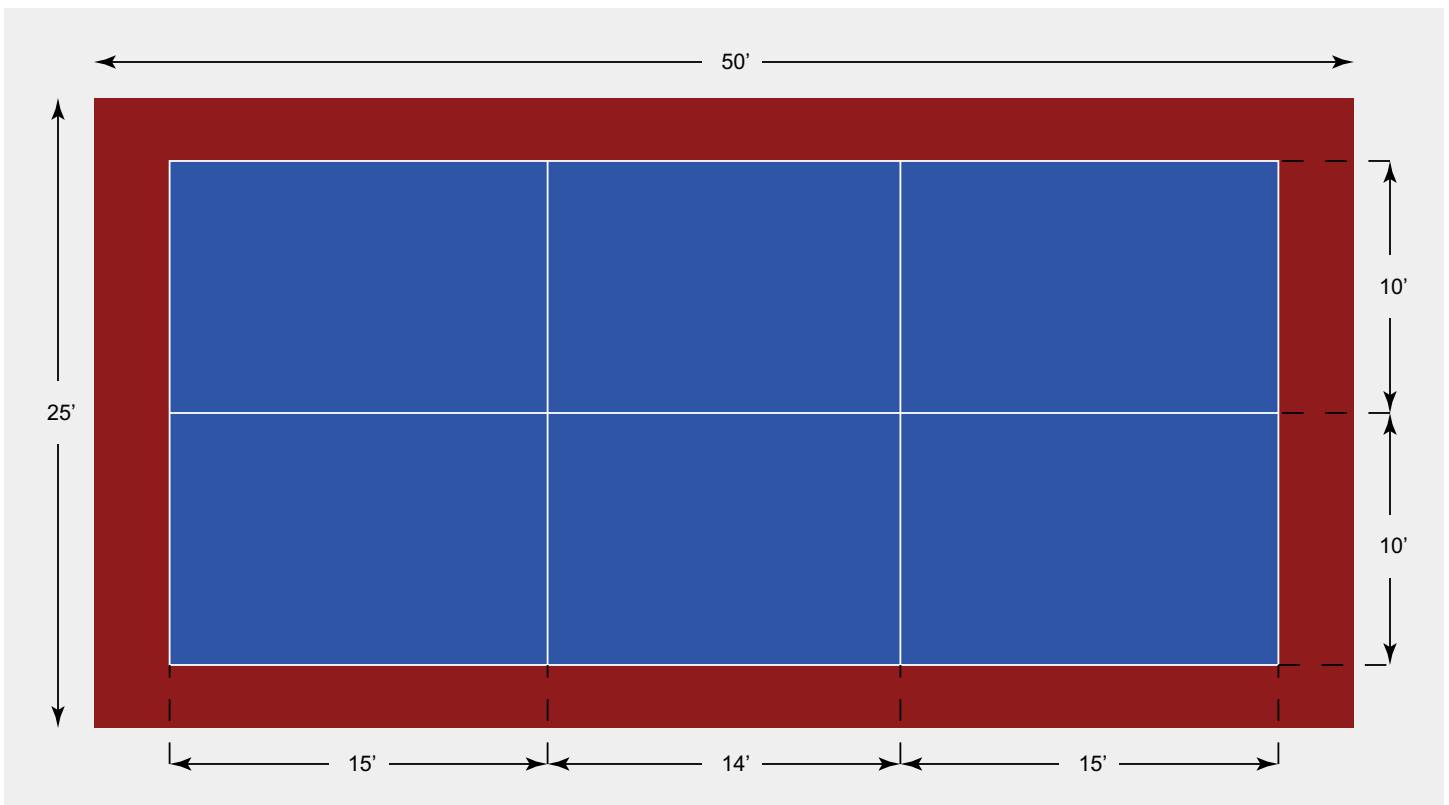


# PICKLEBALL

Another excellent option for tennis lovers short on space is pickleball — one of the fastest growing racquet sports in the country. (Flex Court Athletics happens to be one of the largest suppliers for outdoor pickleball court surfaces — ProStep tiles are a great choice here.)

So what is this sport with a funny name all about? Unlike paddle tennis, which shares a lot of similarities with tennis, pickleball is played with a whiffle ball and feels a little bit like the lifesize version of ping pong. Its games are played to 11 points (win by two) and only the serving side can score.

## OFFICIAL PICKLEBALL COURT DIMENSIONS



## IF I HAVE A FLEX COURT TENNIS SURFACE INSTALLED, CAN I PLAY PADDLE TENNIS OR PICKLEBALL ON IT?

**YOU'RE GOING TO LOVE THIS ANSWER: YES!**

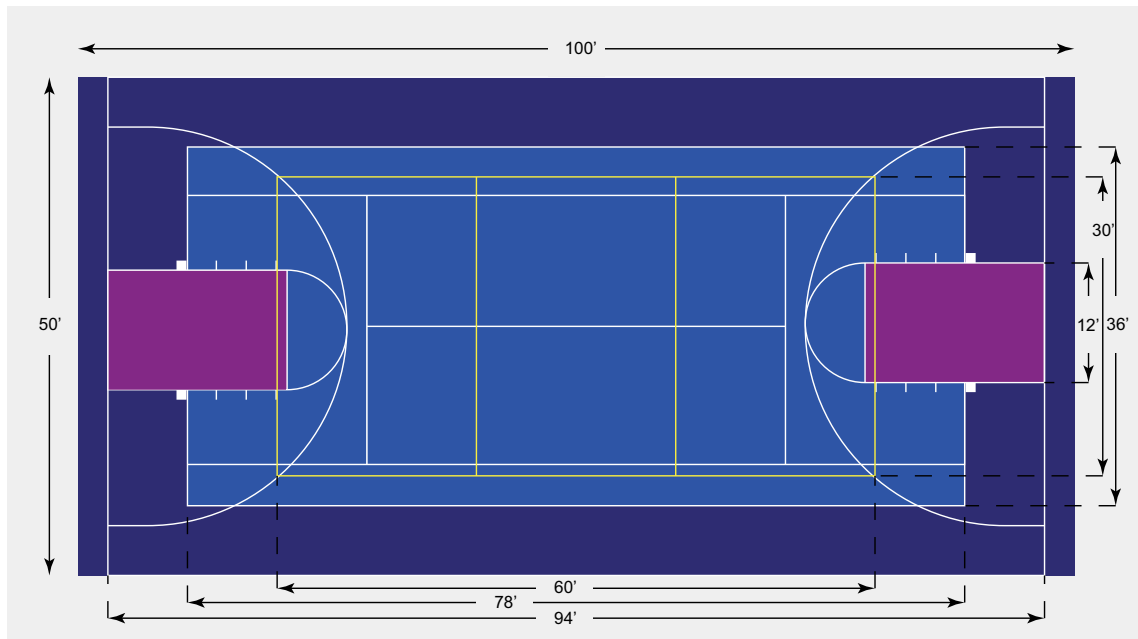
While paddle tennis and pickleball use a lower net and different game boundaries, Neave Sports can easily install up to four paddle tennis or pickleball courts over an existing tennis court.



# MULTIGAME SURFACES

If your home team is made up of multiple-sport athletes, why not combine the love of their favorite sports into a single surface? With Flex Court's highly customizable design and layout process, you can wrap up your morning singles match, grab a light lunch and head back out to play some afternoon volleyball with your kids.

Flex Court's multigame surfaces can incorporate multiple game boundaries in a single layout depending on your sporting needs.



**Combine any of the following sports seamlessly into a single surface**  
(all sports listed are also available in standalone layouts)

- » Basketball
- » Tennis
- » Volleyball
- » Badminton
- » Roller hockey
- » Paddle tennis
- » Pickleball
- » Shuffleboard
- » Handball
- » Cross training and fitness

# ADDITIONAL **FLEX COURT** APPLICATIONS



## FITNESS STUDIO

The perfect at-home weight room or yoga studio starts from the ground up. Neave Sports doesn't limit its Flex Court installation to the outdoors. We also install long lasting, low maintenance surfaces for your home fitness needs.

All the deadlifts, kettlebells and burpees in the world are no match for Flex Court's RubberFlex tiles. This non-skid, recycled rubber flooring option can withstand your most intense workouts and reduce noise in the process.

Interested in a yoga studio to call your own, but your hardwood or concrete flooring isn't very inviting? Designed for comfort and safety, Flex Court's AerobiFlex interlocking tiles offer commercial-grade durability while delivering a soft, smooth surface perfect for cardio exercise, pilates and yoga.



## SWIMMING POOL DECK

It may seem Neave Sports is a bit sportscentric with our Flex Court applications — and we are — but we also recognize that these versatile outdoor tiles can also improve the way you relax and entertain.

A perfect example of that is putting them to use around your swimming pool deck.

**To improve the function and feel of your poolside deck, Flex Court's outdoor tiles are your best bet** and that's because they are:

- » fast drying
- » nonslip
- » splinter-free surface
- » cool for barefoot walking, sitting or lying on — even in direct summer sun
- » mildew and odor resistant
- » fade and crack resistant thanks to special UV-inhibitors



# WHAT TO EXPECT:

## THE FLEX COURT INSTALLATION PROCESS

You're ready to play some [insert favorite sport here]. Now wouldn't it be great if all you had to do was walk out your backdoor and voila! Turning that "wouldn't it be great" into reality starts with a solid plan — or in this case, design.

Enter [Neave Sports' Custom Court Builder](#).

### EVERY GREAT PLAY STARTS WITH A GREAT DESIGN

At Neave Sports, we've made the process of designing your next sport surface fun and easy. Just pick your sport (or sports). Choose your colors. And before you know it, a Neave Sports client care specialist will get in touch with you to get to work.

With a palette of 18 colors to choose from for lines, inner courts and outer courts along with a slew of layouts, it's time to step up to the line and design a playing surface uniquely yours.

# BUILD YOUR OWN COURT

Use the **Neave Sports Custom Court Builder** to create your dream court. It's free and easy to use!

CREATE YOUR OWN COURT LAYOUT NOW



[WWW.NEAVESPORTS.COM/CUSTOM-COURT-BUILDER](http://WWW.NEAVESPORTS.COM/CUSTOM-COURT-BUILDER)

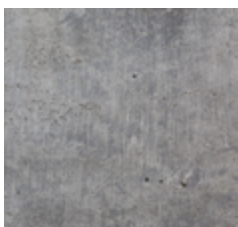
**NEXT: THE BASE SURFACE >**

## THE BASE SURFACE — GIVE YOUR FLEX COURT A GOOD FOUNDATION

We understand not everyone interested in a Flex Court will be retrofitting an existing sport surface with Flex Court's outdoor tiles. Many of our customers start from scratch, designing and building the court of their dreams from the ground up.

No matter your starting point, the performance of a Flex Court application will rely heavily on the base surface it's placed upon. So before we get into the general outline of a Flex Court installation, let's talk about your base.

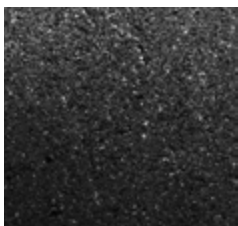
Here are the top three options for a Flex Court base surface.



### CONCRETE

Our favorite Flex Court base surface is concrete. It offers the best hard surface and best ball response, no matter the sport.

When concrete is poured properly and includes fiber or wire mesh for strength, it can last 60 years — no maintenance. Concrete also provides a level of convenience because it can fit the court space exactly. And any anchors to hold poles for nets and hoops can be installed when the concrete is poured.



### ASPHALT

Less expensive than concrete, asphalt offers similar ball response but the same can't be said for its durability. After a few years, Flex Court tiles may need to be temporarily removed to patch asphalt cracks underneath.

Also keep in mind asphalt will require a large roller machine to flatten it out, so you'll need to have room in your yard — and budget — for the machinery.



### CRUSHED STONE

A base surface of compacted crushed stone when poured, compacted and watered down is typically six to 10 inches deep. It's the least expensive option of the three listed here. Crushed stone offers excellent drainage, and it's a good option if you know the court you plan to install with not be permanent.

One drawback of crushed stone is that it is susceptible to undulation if exposed to repeated freezing and thawing.

[WWW.NEAVESPORTS.COM/CONTACT-US](http://WWW.NEAVESPORTS.COM/CONTACT-US)

**NEXT: FLEX COURT INSTALLATION OUTLINE >**



## FLEX COURT INSTALLATION OUTLINE

Here's a general outline of what a homeowner can anticipate during the Flex Court installation process with Neave Sports:

1. Create a court design for your property using our [Custom Court Builder](#)
2. Conduct a property walkthrough with a Neave Sports specialist
3. Establish timeline for project, including start and completion dates.
4. Obtain permits from proper municipal departments (Neave Sports will take care of this)
5. If necessary, perform rough grading for base surface
6. Install base surface and on-court components (hoops and net posts)
7. Apply Flex Court outdoor tiles to base surface
8. Install add-on/landscape enhancements (fencing, lighting, plantings, seating, etc.)
9. Conduct final inspection
10. Lace up!



[WWW.NEAVESPORTS.COM/CONTACT-US](http://WWW.NEAVESPORTS.COM/CONTACT-US)

# GET THE BALL BOUNCING

## WITH NEAVE SPORTS

---

Before you can serve like Serena or shoot like Curry, you need a teammate that understands the value and benefits of having a safe and accessible sport surface right outside your door.

**Put us in, Coach!** *Neave Sports is ready for action.* It's important to us that you make the most of this new addition to your home — and our family-owned company is staffed with a team of experts to make that happen.

### BEYOND YOUR COURT — NEAVE KEEPS THE BALL IN PLAY

At Neave Sports, we don't just design and construct Flex Court sport surfaces. We proudly take a holistic approach to your new Flex Court construction. Beyond the installation of on-court essentials like basketball hoops and net posts, we consider everything around the court and behind the scenes, too, from your home's landscaping to securing required permits.

**Neave Group Outdoor Solutions** is a single-source service provider that seamlessly integrates all of Neave Sports' sister divisions to offer a full suite of landscape enhancements to improve the look and feel surrounding your newly installed Flex Court.

- » **Not interested in tracking down runaway balls?**  
[Neave Carpentry](#) can install fencing around your Flex Court.
- » **Want your Flex Court to blend naturally into its surroundings?**  
[Neave Landscaping](#) knows what it will take.
- » **Love playing under the lights?**  
[Neave Lighting](#) has your outdoor lighting solution.
- » **Interested in turning an exposed retaining wall into a hitting wall?**  
[Neave Masonry](#) can make that happen.

**See what we mean?** Neave Group Outdoor Solutions is fully equipped to handle the ENTIRE project, from start to finish. We literally do it all. And the best part? You'll work with a single dedicated point person at Neave to ensure your goals, needs and budget concerns are heard loud and clear.



# TURNING HOOP DREAMS INTO REALITY

As an authorized Flex Court Athletics dealer, Neave Sports is ready to help you step your game up. We'd love to hear from you, so our experts can turn your hoop dreams into reality.

**Take the first step today by checking out [Neave Sports' Custom Court Builder](#).**

And if you have any questions about installing a custom sport surface at your home, fill out [our simple web form](#), and we'll contact you about setting up your free consultation.

CONTACT US TODAY TO GET STARTED

## **PREFER THE PHONE? GIVE US A CALL**

If you're in the **Hudson Valley**, call us at **(845) 463-0592**

If you're in **Westchester County**, call **(914) 271-7996**

If you're from **Connecticut**, dial **(203) 212-4800**